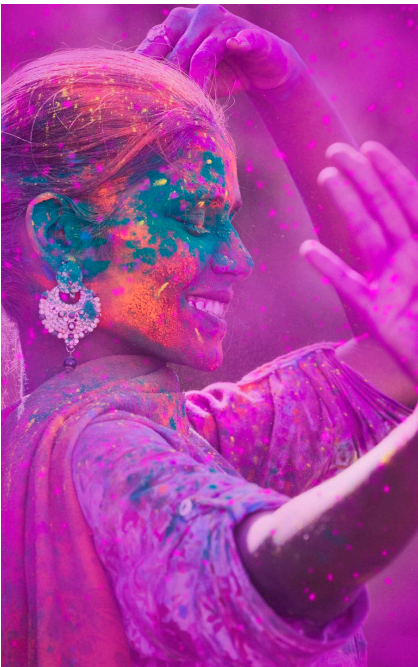


# WestRock Tango® C2S

## Product Guide



### Some resumes tell a story before anything's ever printed on them

Your print job is in good hands with Tango C2S. This premium 92 bright Solid Bleached Sulfate (SBS) paperboard is coated on both sides, plus it has an added ingredient not found in other SBS products: a proven reputation for outstanding runnability, printability and consistency.

#### Features and Benefits

**The perfect shade.** Its clean-white color is perfect for achieving rich printed images with greater depth and natural flesh tones.

**Impressive fade resistance.** Proprietary coating and fade-resistant design provide a longer shelf life for maximum value.

**Uniformity.** A double coating and identical finishing processes result in outstanding side-to-side uniformity and print performance.

**Sturdier.** Tango C2S is as much as 80% sturdier<sup>1</sup> than coated freesheet cover. That means Tango printed pieces feel more substantial and higher quality in consumers' hands, which helps strengthen brands, influence consumers and lift response rates.

**Reliable.** Sheet cleanliness, excellent ink lay-down and trouble-free performance, whether it's on press or finishing.

**Peerless.** As a true SBS, Tango single-ply paperboard is optimized with the right blend of hardwood and softwood pulp. Because it's produced at a fully integrated mill, you can count on Tango products for strength, sturdiness, runnability and visual appeal.

**Responsible.** All WestRock North American paperboard mills are certified to the SFI<sup>®</sup>, PEFC<sup>™</sup> and FSC<sup>®</sup> Chain of Custody standards.<sup>2</sup> All Tango products are recyclable.

#### Product Uses



Entertainment  
and Sports Tickets  
10 pt



POP Displays  
10 pt-24 pt



Signage  
12 pt-48 pt



Brochures  
10 pt



Lottery Tickets  
10 pt



Gift Cards  
28 pt, 30 pt



Business Cards  
14 pt, 16 pt



Photo Books  
10 pt



Menus  
12 pt



Direct Mail  
and Postcards  
10 pt-18 pt



Sports and  
Game Cards  
12 pt-24 pt



Banners  
12 pt, 14 pt

#### Product Classifications

##### Product type

SBS Paperboard

##### Structure

Solid Bleached Sulfate

Double Clay Coated Both Sides



To learn more about Tango C2S, go to  
[westrock.com/TangoC2S](https://westrock.com/TangoC2S) or scan here.



# Tango C2S

## Product Guide

### Specification Guide

Caliper	Basis Weight 24" x 36"	Cover Weight 20" x 26"	gsm	Gloss <sup>3</sup>	Brightness <sup>4</sup>	Whiteness <sup>5</sup>	Taber Stiffness <sup>6</sup>	
							MD	CD
◆ 10 pt	138	83	220	51	92	122	60	32
◆ 12 pt	160	96	260	51	92	122	100	50
14 pt	180	108	295	51	92	122	135	70
16 pt	195	117	320	51	92	122	203	95
18 pt	212	128	345	51	92	122	245	126
20 pt	230	138	375	51	92	122	315	165
24 pt	275	166	440	51	92	122	470	241
28 pt*	325	196	529	51	92	122	440	230
30 pt*	345	208	561	51	92	122	540	290
32 pt*	365	220	594	51	92	122	640	350
36 pt*	395	238	643	51	92	122	800	470
40 pt*	425	256	691	51	92	122	1000	530
48 pt*	500	301	813	51	92	122	1500	800

### Additional Product Information

#### Sustainability

- All Tango products are recyclable.
- All WestRock North American paperboard mills are certified to the SFI<sup>®</sup>, PEFC<sup>™</sup> and FSC<sup>®</sup> Chain of Custody standards.<sup>2</sup>
- ◆ Recycled fiber content available by specification.<sup>2</sup>

#### Environmental and Safety

- Notices under U.S. California Proposition 65 and the EU REACH are not required.
- Elemental Chlorine Free (ECF) bleached fiber.
- Meets heavy metal limits of the U.S. Model Toxics in Packaging rules and Article 11 of EU Directive 94/62/EC.

#### Food Contact

- Meets multiple national requirements for food contact packaging, e.g., US and Canada. Contact your sales representative for information on specific markets and end uses.

#### Quality

- Produced at an ISO 9001 certified facility.

All WestRock North American paper mills are certified to the SFI<sup>®</sup>, PEFC<sup>™</sup> and FSC<sup>®</sup> Chain of Custody Standards. Certificate Codes: SFI Certified Sourcing: NSF-SFI-CS-6S751, SFI CoC: NSF-SFICOC-6S751, PEFC: NSF-PEFCOC-6S751, FSC Company Code: FSC-C104002.

<sup>1</sup> Sturdiness based on Tango C2S Taber Stiffness measure compared to coated freesheet at equivalent cover weights.

<sup>2</sup> Contact your WestRock sales representative for certified fiber or recycled fiber availability for Tango products.

<sup>3</sup> TAPPI 480

<sup>4</sup> TAPPI 452

<sup>5</sup> ISO 11475:2017

<sup>6</sup> TAPPI 489

\* Duplex structure.

©2020 WestRock Company. WESTROCK, WestRock and Design, the WestRock logo and Tango are trademarks owned by WestRock Company. All other trademarks are properties of their respective owners. All rights reserved.

TPG-0920-C2



To learn more about Tango C2S, go to [westrock.com/TangoC2S](https://westrock.com/TangoC2S) or scan here.

