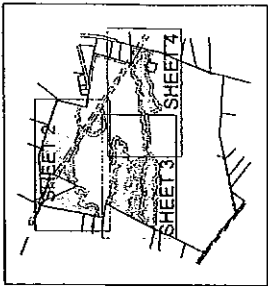
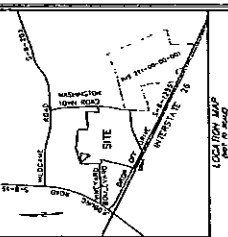


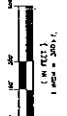
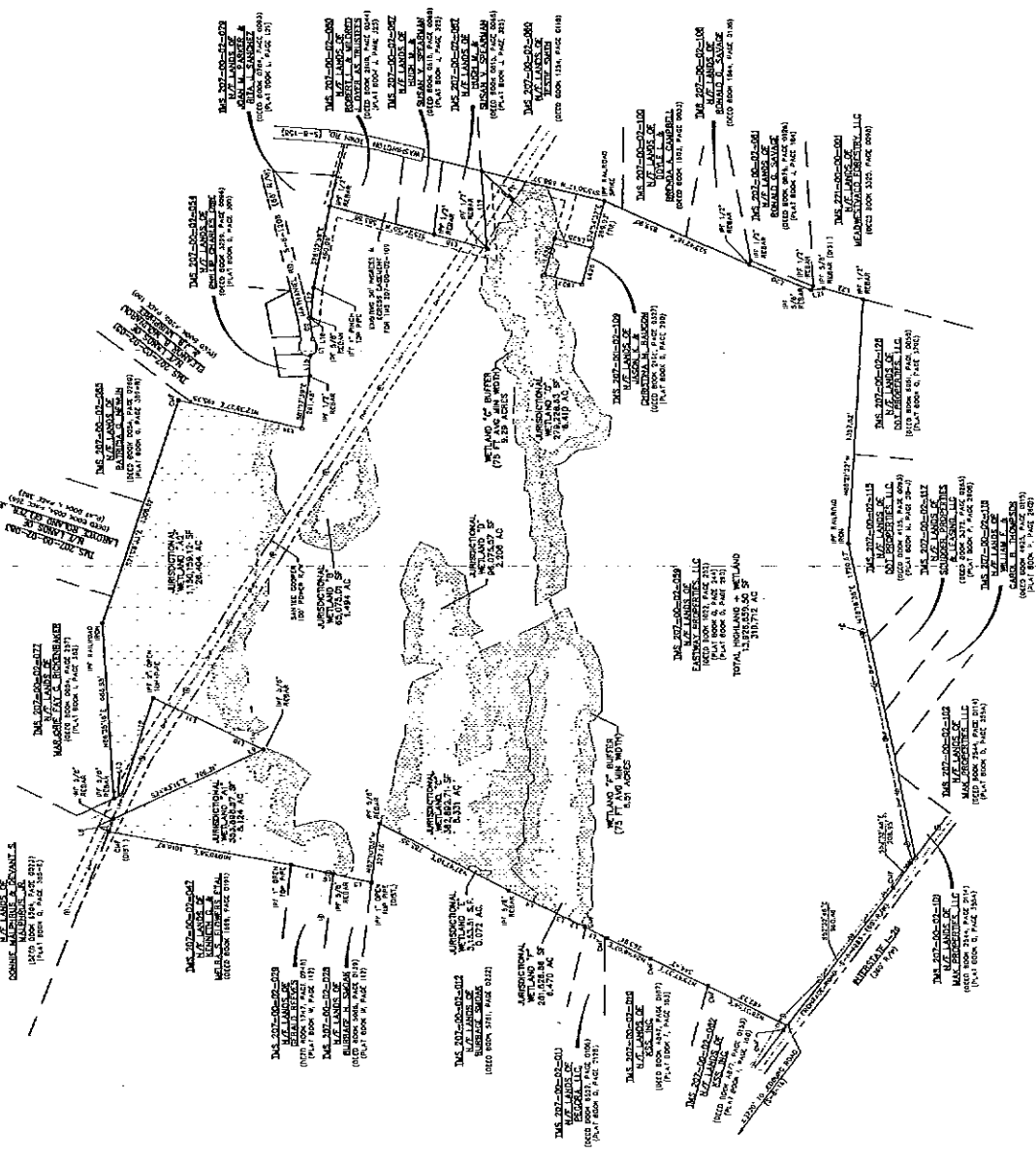
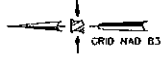
BOUNDARY & WETLAND SURVEY PLAT

OF TRS NO. 207-00-02-05D
CONTAINING A TOTAL OF 319,712 ACRES
ST. JAMES PARISH
BERKLEY COUNTY, SOUTH CAROLINA
DATE SURVEYED: APRIL 25, 2007
JOB NUMBER: 06-207
SCALE: 1" = 300'

SHEET 1 OF 5



LEGEND
 WATER
 WETLAND
 WETLAND SURVEY AREA
 CALCULATED POINT, NO DOCUMENT BY
 MEASUREMENT
 POINT CLASS: P/OPT
 POINT CLASS: P/ACC



SURVEY NOTES
 1. ALL SURVEY DATA IS BASED ON THE SURVEYED DATA.
 2. THE BEARINGS SHOWN HEREON ARE TRUE AND AS.
 3. THE DISTANCES SHOWN ARE IN FEET AND INCHES.
 4. AREA CALCULATED BY COORDINATE METHOD.
 5. WETLANDS HAVE BEEN IDENTIFIED BY VISUAL SURVEY AND AIR PHOTO INTERPRETATION.
 6. THE SURVEY IS A PARTIAL SURVEY.
 7. THIS SURVEY IS A PARTIAL SURVEY.
 8. THE SURVEY IS A PARTIAL SURVEY.

AREAS(S)	AREA(AC)
HIGHLAND	11,334,345.92
WETLAND 'A1'	353,898.57
WETLAND 'A2'	1,182,199.12
WETLAND 'B'	53,975.01
WETLAND 'C'	362,882.71
WETLAND 'D'	58,075.57
WETLAND 'E'	31,551.57
WETLAND 'F'	291,826.86
WETLAND 'G'	278,228.93
TOTAL	13,929,658.50

WETLAND NOTE
 THIS SURVEY IS A PARTIAL SURVEY.
 ALL SURVEY DATA IS BASED ON THE SURVEYED DATA.
 THE BEARINGS SHOWN HEREON ARE TRUE AND AS.
 THE DISTANCES SHOWN ARE IN FEET AND INCHES.
 AREA CALCULATED BY COORDINATE METHOD.
 WETLANDS HAVE BEEN IDENTIFIED BY VISUAL SURVEY AND AIR PHOTO INTERPRETATION.
 THE SURVEY IS A PARTIAL SURVEY.
 THIS SURVEY IS A PARTIAL SURVEY.

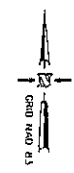
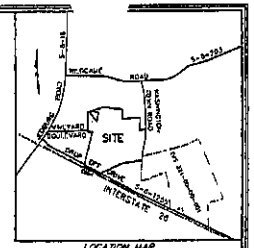
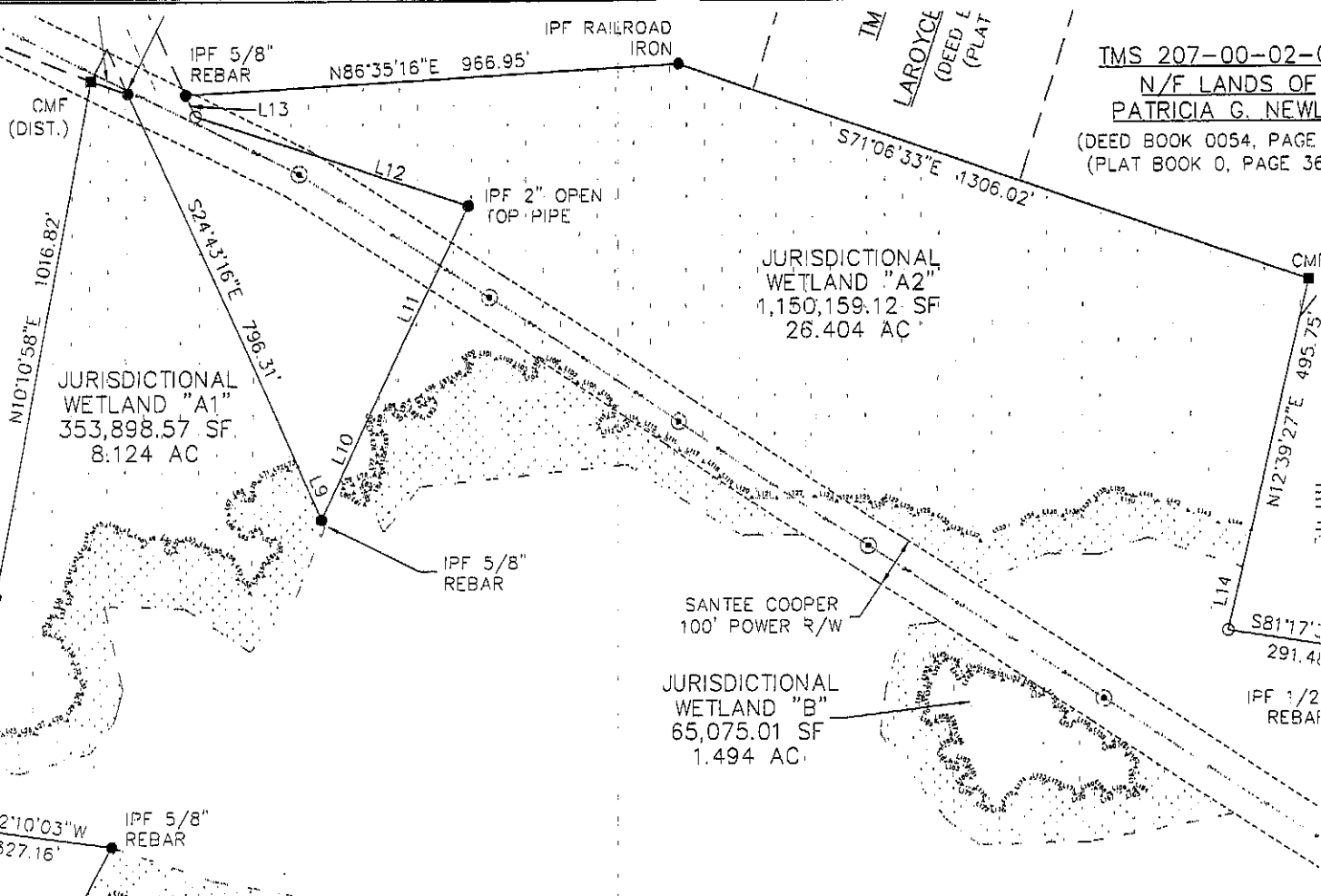
ASL 6-19-07
 STATE OF SOUTH CAROLINA
 BERKLEY COUNTY



CERTIFICATION NOTE
 THIS SURVEY IS A PARTIAL SURVEY.
 ALL SURVEY DATA IS BASED ON THE SURVEYED DATA.
 THE BEARINGS SHOWN HEREON ARE TRUE AND AS.
 THE DISTANCES SHOWN ARE IN FEET AND INCHES.
 AREA CALCULATED BY COORDINATE METHOD.
 WETLANDS HAVE BEEN IDENTIFIED BY VISUAL SURVEY AND AIR PHOTO INTERPRETATION.
 THE SURVEY IS A PARTIAL SURVEY.
 THIS SURVEY IS A PARTIAL SURVEY.

6-19-07
 STATE OF SOUTH CAROLINA
 BERKLEY COUNTY

7-00-02-047
LANDS OF
NETH G. &
FLOWERS ETAL
K 1669, PAGE 0191)



LEGEND

---	PROPERTY LINE
- - - -	ADJACENT PROPERTY LINE
----	ROAD RIGHT-OF-WAY
----	EASEMENT LINE
----	WETLAND LINE
----	WETLAND BUFFER LINE
----	WETLAND BUFFER AREA
+	HIGH PINE WETLAND - 1/2" DIA. & TYPE DESC.
o	CONCRETE MONUMENT FOUND
o	MON. (NO. SET) - 1/2" REBAR
o	CALCULATED POINT, NO MONUMENT SET
o	POWER POLE
o	SOUVENIR TREE
o	ACRE (+/- 3652 SF/ACR)

SURVEY NOTES

1. THIS PROPERTY IS LOCATED IN FLOOD ZONE "X" AS INDICATED ON FLOOD INSURANCE RATE MAP COMMUNITY PANEL #3 150100383C AND #3010179800, BOTH DATED 12/16/2003.
2. THE BOUNDARY SHOWN HEREON ARE OPEN AND SET.
3. THIS PLAN REPRESENTS A SURVEY MADE UPON THE USUAL ACCURACY ONLY, AND IS NOT THE RESULT OF A TITLE SEARCH.
4. AREA DETERMINED BY COORDINATE METHOD.

WETLAND NOTE

I, RICHARD J. HOPF, A PROFESSIONAL LAND SURVEYOR OF THE STATE OF SOUTH CAROLINA, DO HEREBY CERTIFY THAT I HAVE SURVEYED THE LOCATION OF THE JURISDICTIONAL WETLANDS SHOWN HEREON REFERENCED BACKSHOWN (OFFICE) AND THAT THE DRAWING SHOWS THE TRUE DIMENSIONS OF THE JURISDICTIONAL WETLANDS AS CERTIFIED BY BODEN, INC. ON MARCH 16, 2007.

6-19-07 [Signature]

RICHARD J. HOPF, P.L.S. S.C. REG. # 23932
3961 PIERCE ROAD, BODDLEVILLE, S.C. 29472 (843) 613-5770

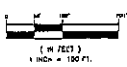
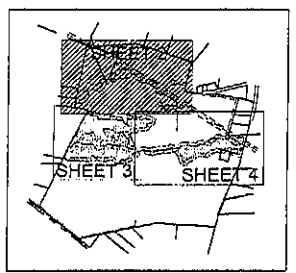


CERTIFICATION NOTE

I, RICHARD J. HOPF, STATE TO THE BEST OF MY KNOWLEDGE, INFORMATION AND BELIEF THE SURVEY SHOWN HEREON WAS MADE IN ACCORDANCE WITH THE REQUIREMENTS OF THE UNIFORM STANDARDS MANUAL FOR THE PRACTICE OF LAND SURVEYING IN SOUTH CAROLINA, AND WERE DEPOSITED TO THE ARCHIVES FOR A CLASS "A" SURVEY AS SPECIFIED THEREIN. ALSO, I HAVE NO KNOWLEDGE, INFORMATION, OR BELIEF OF ANY FACTS AFFECTING THE ACCURACY OTHER THAN THOSE SHOWN SURVEY PRECISION EXCEEDED 1/1000.

6-19-07 [Signature]

RICHARD J. HOPF, P.L.S. S.C. REG. # 23932
3961 PIERCE ROAD, BODDLEVILLE, S.C. 29472 (843) 613-5770



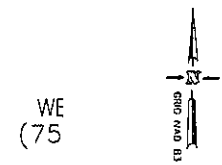
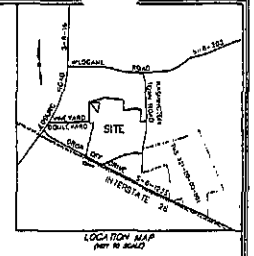
BOUNDARY & WETLAND SURVEY PLAT

OF TMS NO. 207-00-02-059
CONTAINING A TOTAL OF 319,712 ACRES
ST. JAMES PARISH
BERKELEY COUNTY, SOUTH CAROLINA
DATE SURVEYED: APRIL 25, 2007
JOB NUMBER: 05-207
SCALE 1"=100'

SHEET 2 OF 5

(PAGE 112)

3/3 6/0 1/00



IPF 1" OPEN TOP PIPE (DIST.)
 N82°10'03"W 327.16'
 IPF 5/8" REBAR

JURISDICTIONAL WETLAND "C"
 362,892.71 SF
 8.331 AC

JURISDICTIONAL WETLAND "D"
 96,075.57 SF
 2.206 AC

WE (75)

2-012 OF JAK (AGE 0232)
 JURISDICTIONAL WETLAND "E"
 3,153.51 S.F.
 0.072 AC.

JURISDICTIONAL WETLAND "F"
 81,826.86 SF
 6.470 AC

WETLAND "F" BUFFER (75 FT AVG MIN WIDTH)
 6.51 ACRES

LEGEND

---	PROPERTY LINE
- - - -	ADJACENT PROPERTY LINE
- · - · -	ROAD RIGHT-OF-WAY
---	EASEMENT LINE
---	WETLAND LINE
- · - · -	WETLAND BUFFER LINE
---	UTERIOR WETLAND LINE
- · - · -	WETLAND BUFFER LINE
---	WETLAND BUFFER LINE
◆	IRON PIN FOUND BY SUE & TRIP BESS
■	CONCRETE MONUMENT FOUND
□	IRON PIN SET - 1/2" REBAR
△	CALCULATED POINT, NO MONUMENT SET
○	POWER POLE
SF	SQUARE FEET
AC	ACRE (-1,600 SF/ACR)

110
 0167)
 53)

CMF L1
 CMF L2 L3
 L4

N24°46'07"E 263.94'
 N27°47'10"E 785.55'
 N27°47'10"E 785.55'
 N27°47'10"E 785.55'
 N24°46'07"E 263.94'
 N24°46'07"E 263.94'



SURVEY NOTES

1. THIS PROPERTY IS LOCATED IN FLOOD ZONE "X" AS INDICATED ON FLOOD INSURANCE RATE MAP COMMUNITY PANEL #02-100-000000-000 AND 00000000-0000-0000-0000-0000.
2. THE DECAHONS SHOWN HEREON ARE DEDICATED.
3. THIS PLAN REPRESENTS A SURVEY BASED UPON THE LISTED REFERENCES ONLY, AND IS NOT THE RESULT OF A "WALK SURVEY".
4. AREA OBTAINED BY COORDINATE METHOD.

CERTIFICATION NOTE

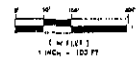
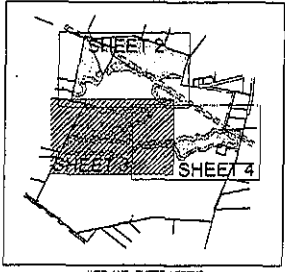
I, RICHARD A. MOORE, A PROFESSIONAL LAND SURVEYOR OF THE STATE OF SOUTH CAROLINA, DO HEREBY CERTIFY THAT I HAVE SURVEYED THE LOCATION OF THE JURISDICTIONAL WETLANDS SHOWN HEREON IN ACCORDANCE WITH THE STANDARDS AND PRACTICES SET FORTH IN THE SURVEYING ACT OF 1962, AS AMENDED, AND THAT THIS DRAWING SHOWS THE TRUE DIMENSIONS OF THE JURISDICTIONAL WETLANDS AS CERTIFIED BY ME, AND ON MARCH 19, 2007.

R.A. Moore 6-19-07
 RICHARD A. MOORE, P.L.L.C.
 3361 PIERCE ROAD, RIDGELAND, SC 29472 (843) 833-5720

WETLAND NOTE

I, RICHARD A. MOORE, A PROFESSIONAL LAND SURVEYOR OF THE STATE OF SOUTH CAROLINA, DO HEREBY CERTIFY THAT I HAVE SURVEYED THE LOCATION OF THE JURISDICTIONAL WETLANDS SHOWN HEREON IN ACCORDANCE WITH THE STANDARDS AND PRACTICES SET FORTH IN THE SURVEYING ACT OF 1962, AS AMENDED, AND THAT THIS DRAWING SHOWS THE TRUE DIMENSIONS OF THE JURISDICTIONAL WETLANDS AS CERTIFIED BY ME, AND ON MARCH 19, 2007.

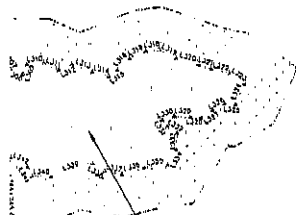
R.A. Moore 6-19-07
 RICHARD A. MOORE, P.L.L.C.
 3361 PIERCE ROAD, RIDGELAND, SC 29472 (843) 833-5720



BOUNDARY & WETLAND SURVEY PLAT

OF TMS NO 207-00-02-059
 CONTAINING A TOTAL OF 319.712 ACRES
 ST. JAMES PARISH
 BERKELEY COUNTY, SOUTH CAROLINA
 DATE SURVEYED: APRIL 25, 2007
 JOB NUMBER 06-207
 SCALE 1" = 100'
 SHEET 3 OF 5

FOR TMS 207-00-02-109



JURISDICTIONAL WETLAND "D"
96,075.57 SF
2.206 AC

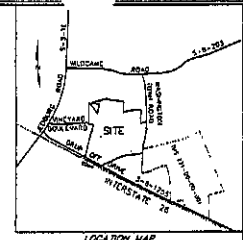
WETLAND "G" BUFFER
(75 FT AVG MIN WIDTH)
9.29 ACRES

JURISDICTIONAL WETLAND "G"
279,228.63 SF
6.410 AC

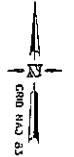
TMS 207-00-02-109
N/F LANDS OF
JASON K. &
CHRISTINA M. BAUCOM
(DEED BOOK 2166, PAGE 0327)
(PLAT BOOK Q, PAGE 290)

TMS 207-00-02-100
N/F LANDS OF
DOYLE L. &
BRENDA A. CAMPBELL
(DEED BOOK 1603, PAGE 0033)

07-00-02-059
F LANDS OF
PROPERTIES, LLC

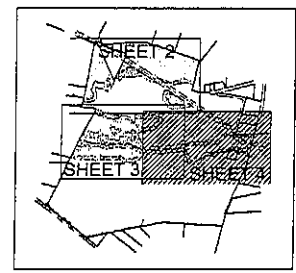


LOCATION MAP
NOT TO SCALE



LEGEND

---	PROPERTY LINE
---	ADJACENT PROPERTY LINE
---	ROAD FRONT-OF-WAY
---	EXISTING ROAD
---	WETLAND LINE
---	WETLAND BUFFER LINE
---	DIVIDED FENCE LINE
---	WETLAND BUFFER AREA
---	IRON PIN FOUND BY SITE & EPCO DESIG.
---	CONCRETE WETLAND FOUING
---	IRON PIN SET - 1/2" REBAR
---	CALCULATED POINT, NO WETLAND SET
---	POWER POLE
---	SQUARE FEET
---	ACRE (43,560 SF/ACRES)



WETLAND SHEET LEGEND
NOT TO SCALE

BOUNDARY &
WETLAND
SURVEY PLAT

OF TMS NO. 207-00-02-059
CONTAINING A TOTAL OF 319.712 ACRES
ST. JAMES PARISH
BERKELEY COUNTY, SOUTH CAROLINA
DATE SURVEYED: APRIL 25, 2007
JOB NUMBER: 05-207
SCALE 1"=100'
SHEET 4 OF 5

SURVEY NOTES

1. THIS PROPERTY IS LOCATED IN FLOOD ZONE "X" AS INDICATED ON FLOOD INSURANCE RATE MAP COMMUNITY PANEL #5 4510300000 AND 4510300000, BOTH DATED 10/19/2005.
2. THE SCRAMBLES SHOWN HEREON ARE NOT TO BE USED.
3. THIS PLAT REPRESENTS A SURVEY BASED UPON THE LISTED REFERENCES ONLY, AND IS NOT THE RESULT OF A TITLE SEARCH.
4. AREA DETERMINED BY COORDINATE METHOD.

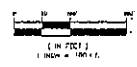
WETLAND NOTE

I, RICHARD J. WOFF, A PROFESSIONAL LAND SURVEYOR OF THE STATE OF SOUTH CAROLINA, DO HEREBY CERTIFY THAT I HAVE SURVEYED THE LOCATION OF THE JURISDICTIONAL WETLANDS SHOWN HEREON IN ACCORDANCE WITH THE REQUIREMENTS OF THE FEDERAL REGULATIONS AND THE REQUIREMENTS OF THE SOUTH CAROLINA AND STATE OF SOUTH CAROLINA. I HAVE ALSO SPECIFICALLY CHECKED THESE AREAS FOR ENCROACHMENTS, PROJECTIONS OR OTHER ACTS VIOLATING THE PROVISIONS OF THESE REGULATIONS.

Richard J. Woff, P.L.S.
3841 PINECREEK ROAD, WOODBRIDGE, S.C. 29141
DATE: 5/11/07
S.C. REG. # 23833
(843) 628-5726



CERTIFICATION NOTE
I HEREBY STATE TO THE BEST OF MY KNOWLEDGE, INFORMATION AND BELIEF, THE SURVEYING INFORMATION HAS BEEN ACCURATELY AND CORRECTLY PREPARED AND THAT I AM A LICENSED SURVEYOR IN THE STATE OF SOUTH CAROLINA. I HAVE ALSO SPECIFICALLY CHECKED THESE AREAS FOR ENCROACHMENTS, PROJECTIONS OR OTHER ACTS VIOLATING THE PROVISIONS OF THESE REGULATIONS.
Richard J. Woff, P.L.S.
5-19-07
3841 PINECREEK ROAD, WOODBRIDGE, S.C. 29141
(843) 628-5726



LINE	BEARING	DISTANCE
U20	S 89° 15' 30" W	21.77
U21	S 89° 15' 30" W	21.77
U22	S 89° 15' 30" W	21.77
U23	S 89° 15' 30" W	21.77
U24	S 89° 15' 30" W	21.77
U25	S 89° 15' 30" W	21.77
U26	S 89° 15' 30" W	21.77
U27	S 89° 15' 30" W	21.77
U28	S 89° 15' 30" W	21.77
U29	S 89° 15' 30" W	21.77
U30	S 89° 15' 30" W	21.77
U31	S 89° 15' 30" W	21.77
U32	S 89° 15' 30" W	21.77
U33	S 89° 15' 30" W	21.77
U34	S 89° 15' 30" W	21.77
U35	S 89° 15' 30" W	21.77
U36	S 89° 15' 30" W	21.77
U37	S 89° 15' 30" W	21.77
U38	S 89° 15' 30" W	21.77
U39	S 89° 15' 30" W	21.77
U40	S 89° 15' 30" W	21.77
U41	S 89° 15' 30" W	21.77
U42	S 89° 15' 30" W	21.77
U43	S 89° 15' 30" W	21.77
U44	S 89° 15' 30" W	21.77
U45	S 89° 15' 30" W	21.77
U46	S 89° 15' 30" W	21.77
U47	S 89° 15' 30" W	21.77
U48	S 89° 15' 30" W	21.77
U49	S 89° 15' 30" W	21.77
U50	S 89° 15' 30" W	21.77
U51	S 89° 15' 30" W	21.77
U52	S 89° 15' 30" W	21.77
U53	S 89° 15' 30" W	21.77
U54	S 89° 15' 30" W	21.77
U55	S 89° 15' 30" W	21.77
U56	S 89° 15' 30" W	21.77
U57	S 89° 15' 30" W	21.77
U58	S 89° 15' 30" W	21.77
U59	S 89° 15' 30" W	21.77
U60	S 89° 15' 30" W	21.77

LINE	BEARING	DISTANCE
U61	S 89° 15' 30" W	21.77
U62	S 89° 15' 30" W	21.77
U63	S 89° 15' 30" W	21.77
U64	S 89° 15' 30" W	21.77
U65	S 89° 15' 30" W	21.77
U66	S 89° 15' 30" W	21.77
U67	S 89° 15' 30" W	21.77
U68	S 89° 15' 30" W	21.77
U69	S 89° 15' 30" W	21.77
U70	S 89° 15' 30" W	21.77
U71	S 89° 15' 30" W	21.77
U72	S 89° 15' 30" W	21.77
U73	S 89° 15' 30" W	21.77
U74	S 89° 15' 30" W	21.77
U75	S 89° 15' 30" W	21.77
U76	S 89° 15' 30" W	21.77
U77	S 89° 15' 30" W	21.77
U78	S 89° 15' 30" W	21.77
U79	S 89° 15' 30" W	21.77
U80	S 89° 15' 30" W	21.77
U81	S 89° 15' 30" W	21.77
U82	S 89° 15' 30" W	21.77
U83	S 89° 15' 30" W	21.77
U84	S 89° 15' 30" W	21.77
U85	S 89° 15' 30" W	21.77
U86	S 89° 15' 30" W	21.77
U87	S 89° 15' 30" W	21.77
U88	S 89° 15' 30" W	21.77
U89	S 89° 15' 30" W	21.77
U90	S 89° 15' 30" W	21.77

LINE	BEARING	DISTANCE
U91	S 89° 15' 30" W	21.77
U92	S 89° 15' 30" W	21.77
U93	S 89° 15' 30" W	21.77
U94	S 89° 15' 30" W	21.77
U95	S 89° 15' 30" W	21.77
U96	S 89° 15' 30" W	21.77
U97	S 89° 15' 30" W	21.77
U98	S 89° 15' 30" W	21.77
U99	S 89° 15' 30" W	21.77
U100	S 89° 15' 30" W	21.77
U101	S 89° 15' 30" W	21.77
U102	S 89° 15' 30" W	21.77
U103	S 89° 15' 30" W	21.77
U104	S 89° 15' 30" W	21.77
U105	S 89° 15' 30" W	21.77
U106	S 89° 15' 30" W	21.77
U107	S 89° 15' 30" W	21.77
U108	S 89° 15' 30" W	21.77
U109	S 89° 15' 30" W	21.77
U110	S 89° 15' 30" W	21.77
U111	S 89° 15' 30" W	21.77
U112	S 89° 15' 30" W	21.77
U113	S 89° 15' 30" W	21.77
U114	S 89° 15' 30" W	21.77
U115	S 89° 15' 30" W	21.77
U116	S 89° 15' 30" W	21.77
U117	S 89° 15' 30" W	21.77
U118	S 89° 15' 30" W	21.77
U119	S 89° 15' 30" W	21.77
U120	S 89° 15' 30" W	21.77

LINE	BEARING	DISTANCE
U121	S 89° 15' 30" W	21.77
U122	S 89° 15' 30" W	21.77
U123	S 89° 15' 30" W	21.77
U124	S 89° 15' 30" W	21.77
U125	S 89° 15' 30" W	21.77
U126	S 89° 15' 30" W	21.77
U127	S 89° 15' 30" W	21.77
U128	S 89° 15' 30" W	21.77
U129	S 89° 15' 30" W	21.77
U130	S 89° 15' 30" W	21.77
U131	S 89° 15' 30" W	21.77
U132	S 89° 15' 30" W	21.77
U133	S 89° 15' 30" W	21.77
U134	S 89° 15' 30" W	21.77
U135	S 89° 15' 30" W	21.77
U136	S 89° 15' 30" W	21.77
U137	S 89° 15' 30" W	21.77
U138	S 89° 15' 30" W	21.77
U139	S 89° 15' 30" W	21.77
U140	S 89° 15' 30" W	21.77
U141	S 89° 15' 30" W	21.77
U142	S 89° 15' 30" W	21.77
U143	S 89° 15' 30" W	21.77
U144	S 89° 15' 30" W	21.77
U145	S 89° 15' 30" W	21.77
U146	S 89° 15' 30" W	21.77
U147	S 89° 15' 30" W	21.77
U148	S 89° 15' 30" W	21.77
U149	S 89° 15' 30" W	21.77
U150	S 89° 15' 30" W	21.77

LINE	BEARING	DISTANCE
U151	S 89° 15' 30" W	21.77
U152	S 89° 15' 30" W	21.77
U153	S 89° 15' 30" W	21.77
U154	S 89° 15' 30" W	21.77
U155	S 89° 15' 30" W	21.77
U156	S 89° 15' 30" W	21.77
U157	S 89° 15' 30" W	21.77
U158	S 89° 15' 30" W	21.77
U159	S 89° 15' 30" W	21.77
U160	S 89° 15' 30" W	21.77
U161	S 89° 15' 30" W	21.77
U162	S 89° 15' 30" W	21.77
U163	S 89° 15' 30" W	21.77
U164	S 89° 15' 30" W	21.77
U165	S 89° 15' 30" W	21.77
U166	S 89° 15' 30" W	21.77
U167	S 89° 15' 30" W	21.77
U168	S 89° 15' 30" W	21.77
U169	S 89° 15' 30" W	21.77
U170	S 89° 15' 30" W	21.77
U171	S 89° 15' 30" W	21.77
U172	S 89° 15' 30" W	21.77
U173	S 89° 15' 30" W	21.77
U174	S 89° 15' 30" W	21.77
U175	S 89° 15' 30" W	21.77
U176	S 89° 15' 30" W	21.77
U177	S 89° 15' 30" W	21.77
U178	S 89° 15' 30" W	21.77
U179	S 89° 15' 30" W	21.77
U180	S 89° 15' 30" W	21.77

LINE	BEARING	DISTANCE
U181	S 89° 15' 30" W	21.77
U182	S 89° 15' 30" W	21.77
U183	S 89° 15' 30" W	21.77
U184	S 89° 15' 30" W	21.77
U185	S 89° 15' 30" W	21.77
U186	S 89° 15' 30" W	21.77
U187	S 89° 15' 30" W	21.77
U188	S 89° 15' 30" W	21.77
U189	S 89° 15' 30" W	21.77
U190	S 89° 15' 30" W	21.77
U191	S 89° 15' 30" W	21.77
U192	S 89° 15' 30" W	21.77
U193	S 89° 15' 30" W	21.77
U194	S 89° 15' 30" W	21.77
U195	S 89° 15' 30" W	21.77
U196	S 89° 15' 30" W	21.77
U197	S 89° 15' 30" W	21.77
U198	S 89° 15' 30" W	21.77
U199	S 89° 15' 30" W	21.77
U200	S 89° 15' 30" W	21.77

LINE	BEARING	DISTANCE
U201	S 89° 15' 30" W	21.77
U202	S 89° 15' 30" W	21.77
U203	S 89° 15' 30" W	21.77
U204	S 89° 15' 30" W	21.77
U205	S 89° 15' 30" W	21.77
U206	S 89° 15' 30" W	21.77
U207	S 89° 15' 30" W	21.77
U208	S 89° 15' 30" W	21.77
U209	S 89° 15' 30" W	21.77
U210	S 89° 15' 30" W	21.77
U211	S 89° 15' 30" W	21.77
U212	S 89° 15' 30" W	21.77
U213	S 89° 15' 30" W	21.77
U214	S 89° 15' 30" W	21.77
U215	S 89° 15' 30" W	21.77
U216	S 89° 15' 30" W	21.77
U217	S 89° 15' 30" W	21.77
U218	S 89° 15' 30" W	21.77
U219	S 89° 15' 30" W	21.77
U220	S 89° 15' 30" W	21.77

LINE	BEARING	DISTANCE
U221	S 89° 15' 30" W	21.77
U222	S 89° 15' 30" W	21.77
U223	S 89° 15' 30" W	21.77
U224	S 89° 15' 30" W	21.77
U225	S 89° 15' 30" W	21.77
U226	S 89° 15' 30" W	21.77
U227	S 89° 15' 30" W	21.77
U228	S 89° 15' 30" W	21.77
U229	S 89° 15' 30" W	21.77
U230	S 89° 15' 30" W	21.77



CERTIFICATION NOTICE

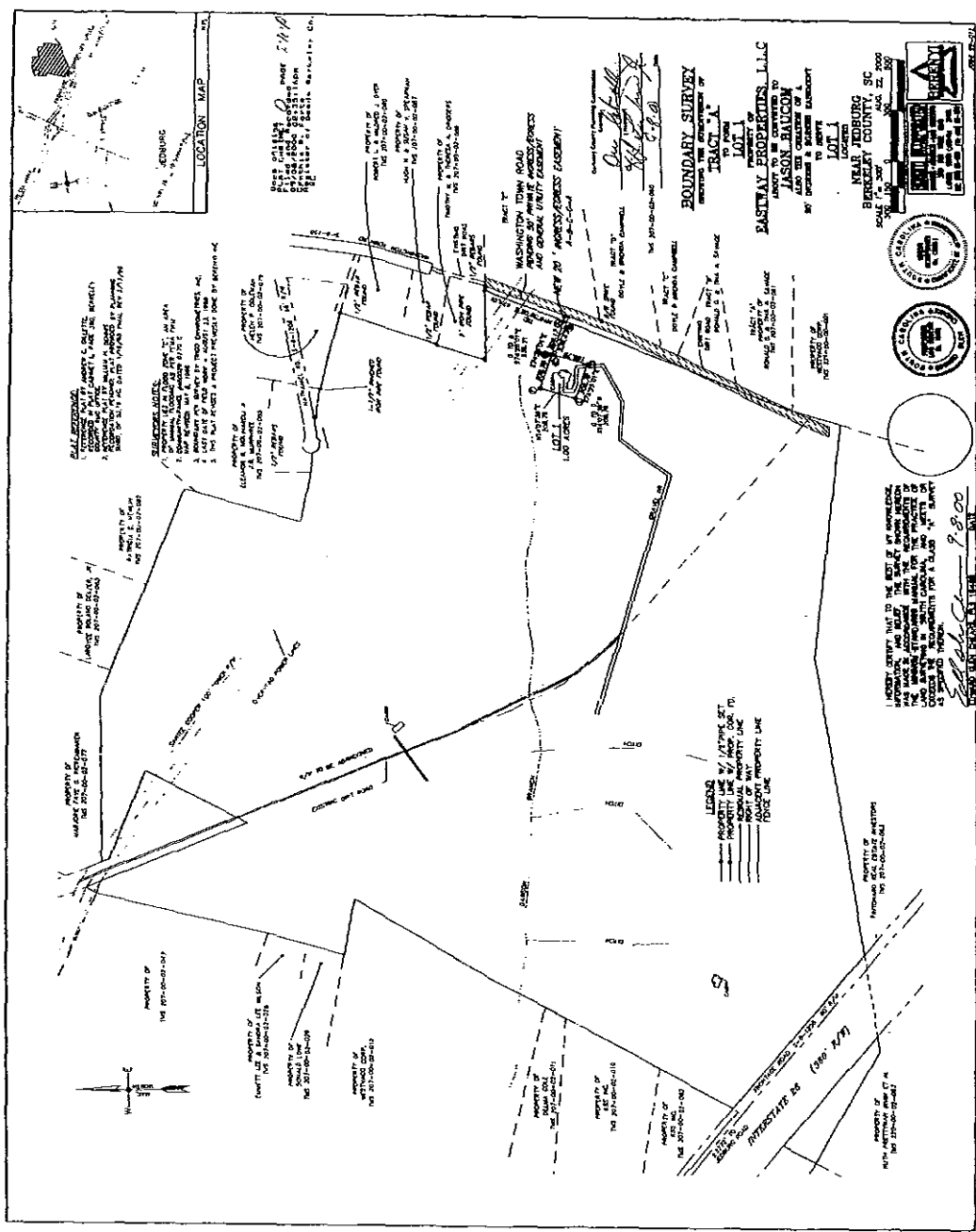
I, the undersigned, certify that the foregoing plat was prepared by me or under my direct supervision and to the best of my knowledge and belief it is true and correct and that I am a duly licensed and qualified professional engineer in the State of Nebraska.

[Signature]
 PROFESSIONAL ENGINEER
 STATE OF NEBRASKA
 No. 11111 N. 111th St., Suite 100, Omaha, NE 68148
 (402) 426-1111

BOUNDARY & WETLAND SURVEY PLAT

OF TMS NO. 207-00-02-058
 ST. JAMES PARISH
 BERKELEY COUNTY, SOUTH CAROLINA
 DATE SURVEYED: APRIL 25, 2002
 JOB NUMBER: 06-2007

cab
0290A



LOCATION MAP

BASE CALLING... more 2-1-10

PROPERTY OF... 100' R/W

WASHINGTON TRUNK ROAD

BOUNDARY SURVEY
TRACT 1
LOT 1

PASTWAY PROPERTIES, L.L.C.
NEAR JEDBURG
BERKELEY COUNTY, SC

PROPERTY OF... 100' R/W

PROPERTY OF... 100' R/W

PROPERTY OF... 100' R/W

PROPERTY OF... 100' R/W

PROPERTY OF... 100' R/W

PROPERTY OF... 100' R/W

PROPERTY OF... 100' R/W

PROPERTY OF... 100' R/W

PROPERTY OF... 100' R/W

PROPERTY OF... 100' R/W

PROPERTY OF... 100' R/W

PROPERTY OF... 100' R/W

PROPERTY OF... 100' R/W

PROPERTY OF... 100' R/W

PROPERTY OF... 100' R/W

PROPERTY OF... 100' R/W

PROPERTY OF... 100' R/W

PROPERTY OF... 100' R/W

PROPERTY OF... 100' R/W

PROPERTY OF... 100' R/W

PROPERTY OF... 100' R/W

PROPERTY OF... 100' R/W

PROPERTY OF... 100' R/W

PROPERTY OF... 100' R/W

PROPERTY OF... 100' R/W

PROPERTY OF... 100' R/W

PROPERTY OF... 100' R/W

PROPERTY OF... 100' R/W

PROPERTY OF... 100' R/W

PROPERTY OF... 100' R/W